

EagleEye™ -1

LED UV-A Headlamp

EEX-1000

- ▶ Nominal steady-state UV-A (365 nm) intensity of **15,000 $\mu\text{W}/\text{cm}^2$** at 15 in (38 cm)



Dust Tight & Water Resistant



Fanless & Cool Running



Lightweight & Rugged



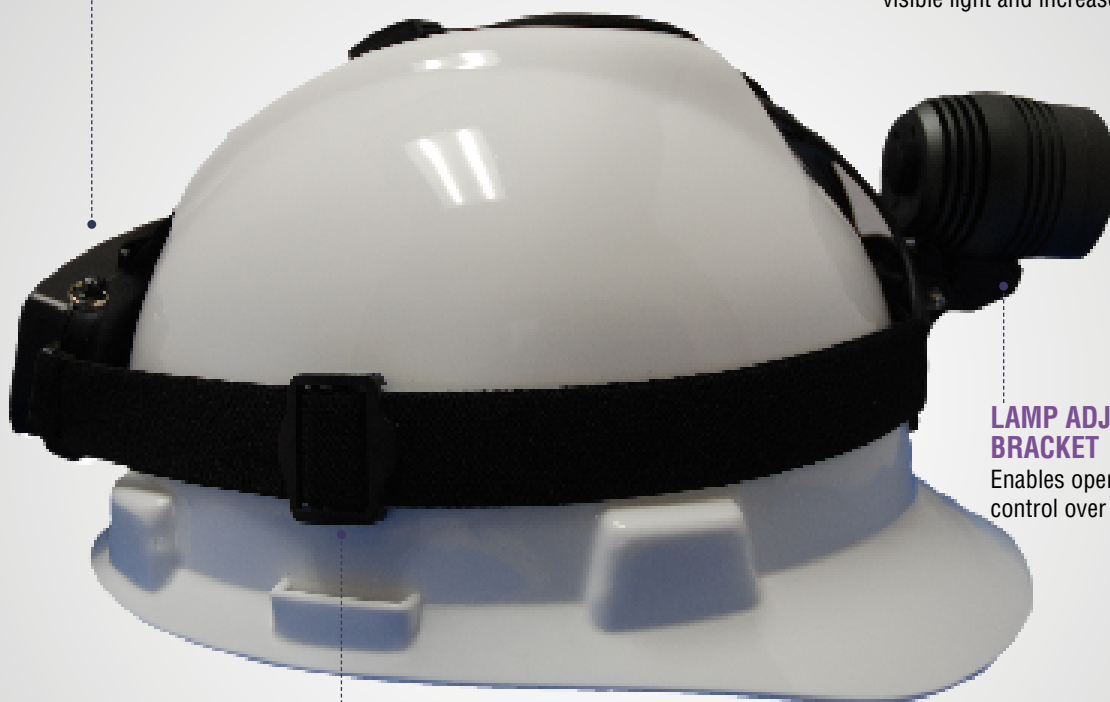
Instant-On Operation

RECHARGEABLE BATTERY

5 Hours of uninterrupted high quality UV-A Light.

NDT UV-A HEADLAMP

Equipped with UV-A pass filter to minimize visible light and increase UV light



LAMP ADJUSTMENT BRACKET

Enables operator to gain full control over direction of light

ADJUSTABLE HEADBAND

Fit lamp directly onto operators head or on an helmet.

EagleEye™-1 EEX-1000



MODEL	NOMINAL STEADY-STATE UV-A INTENSITY at 15 in (38 cm) ①	UV-A COVERAGE AREA at 15 in (38 cm) at minimum 1,000 $\mu\text{W}/\text{cm}^2$
EEX-1000	15,000 $\mu\text{W}/\text{cm}^2$	4.5 in (11.4 cm) Diameter

① UV-A intensity reading taken with the Spectro-UV® AccuMAX™ Series meter, and is factory set to the value shown.

Light Source:	UV-A (365 nm)
Lamp Style:	Cordless lamp
Lamphead Diameter:	1.89 in (4.8 cm)
Lamp Dimensions:	(L) 2.32 in (5.9 cm) X (W) 1.89 in (4.8 cm)
Length:	11.8 in (30 cm)
Width:	9.44 in (24 cm)
Height:	4.3 in (11 cm)
Weight:	8.4 oz (238 g) (with battery)
Power Requirements:	3.7V, 2.0 3000 mAh Li-Ion removable battery stick (rechargeable)
Run Time:	5 hours (continuous)
Charge Time:	4 hours

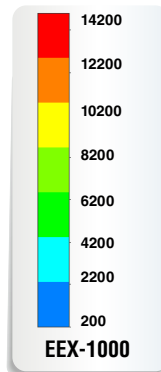
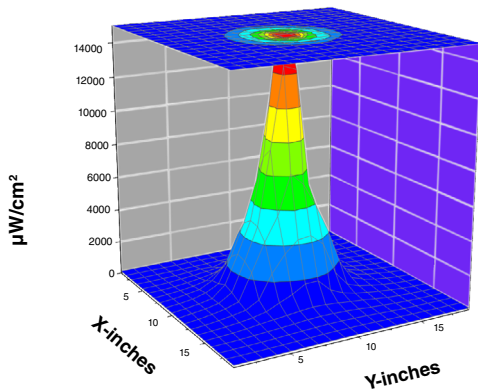
EEX-1000 EagleEye™-1™ Kit

Comes complete with EagleEye™-1 NDT UV-A lamp, two rechargeable batteries, battery charging cradle with cord set, UV-absorbing spectacles and hard carrying case.

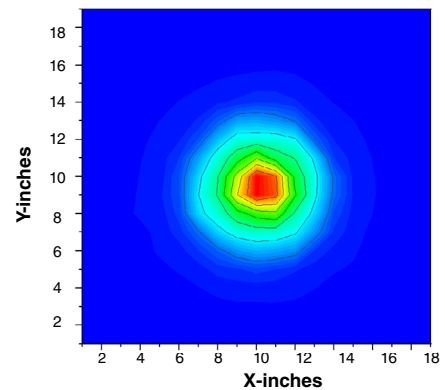


UV-A Beam Profiles

Surface Contour Profile at 15 in (38 cm)



Top Intensity Profile at 15 in (38 cm)



SPECTRO-UV®

www.Spectro-UV.com
4 Dubon Ct., Farmingdale, NY 11735
866-230-7305

NDT
3/23 A210101-1
PRINTED IN USA