

TESTED AND COMPLIES WITH



ASTM
E3022-18
Standard

SPECTRO-UV®

CLASSIC SERIES

LED INSPECTION LAMP

CLA-150

▶ Nominal steady-state UV-A (365 nm) intensity of 8,000 $\mu\text{W}/\text{cm}^2$ at 15 in (38 cm)

▶ UV-A Coverage Area: 7.5 in (19 cm)



Dust Tight & Water Resistant



Fanless & Cool Running



Lightweight & Rugged



Instant-On Operation

ROCKER SWITCH

Easy on/off operation with rear Rocker switch

RUBBER BUMPER

Protects LED's from damage



LONG-LASTING UV-A LENSES

Equipped with UV-A Pass Filter

PISTOL GRIP

Comfortable, balanced control

ANODIZED ALUMINUM HOUSING

Minimizes corrosion and stands up to years of heavy use

CLASSIC SERIES CLA-150

MODEL	NOMINAL STEADY-STATE UV-A INTENSITY at 15 in (38 cm) ①	UV-A COVERAGE AREA at 15 in (38 cm) at minimum 1,000 $\mu\text{W}/\text{cm}^2$
CLA-150	8,000 $\mu\text{W}/\text{cm}^2$	7.5 in (19 cm)

① UV-A intensity reading taken with the Spectro-UV® AccuMAX™ Series meter, and is factory set to the value shown.

Light Source:	4 UV-A LED's
Lamp Style:	Handheld lamp
Lamphead Diameter:	4.4 in (11.18 cm)
Length:	6.7 in (17 cm)
Width:	3.4 in (8.6 cm)
Height:	7.45 in (18.9 cm)
Weight:	2.05 Lb (930 g)
Power Requirements:	90 - 270 VAC, 50 TO 60 Hz
Power Cord:	9 Foot

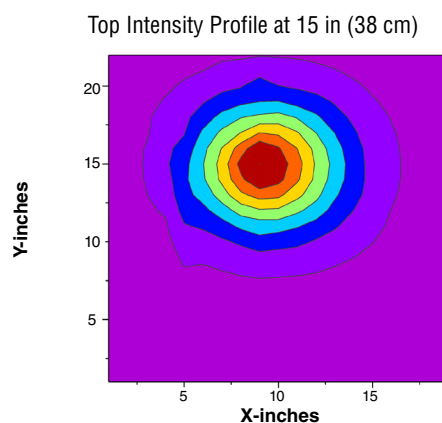
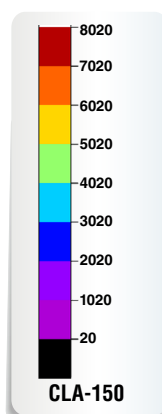
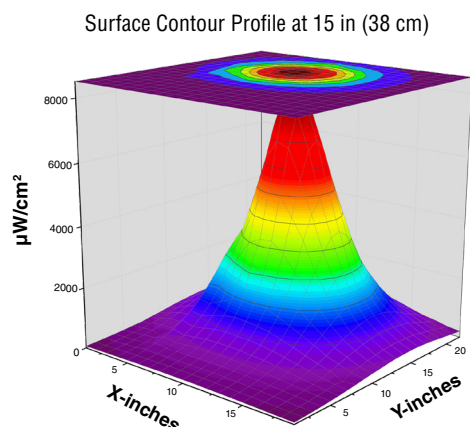
CLA-150

Classic Series Dual Function LED Inspection Lamp Kit

Comes complete with Classic Series Dual Function LED Inspection Lamp with lanyard, Power Supply, AC Cord set, UV Absorbing Spectacles, Carrying Case For Spectacles, Protective Carrying Case.



UV-A Beam Profiles



SPECTRO-UV®

www.Spectro-UV.com

4 Dubon Ct., Farmingdale, NY 11735
866-230-7305

NDT
2/24 A2032023-2
PRINTED IN USA