

TESTED TO COMPLY WITH



ASTM
E3022-18
Standard

SPECTRO-UV®

THE GLOBAL LEADER IN ULTRAVIOLET EQUIPMENT

PowerMAX 365 PM-16B

UV-A LED Panel Flood Lamp

Nominal steady-state UV-A (365 nm) intensity of 6500 $\mu\text{W}/\text{cm}^2$ at 15 in (38 cm)

Low visible light emission—less than 0.5 foot-candle (2.2 lux)

Ideal for:



NDT
INSPECTION
BOOTHS



FLUORESCENT
PENETRANT AND
MAGNETIC PARTICLE
INSPECTION



WASH STATION
INSPECTION



SCREENING OF
FLUORESCENT
PARTICLES

ROCKER SWITCH

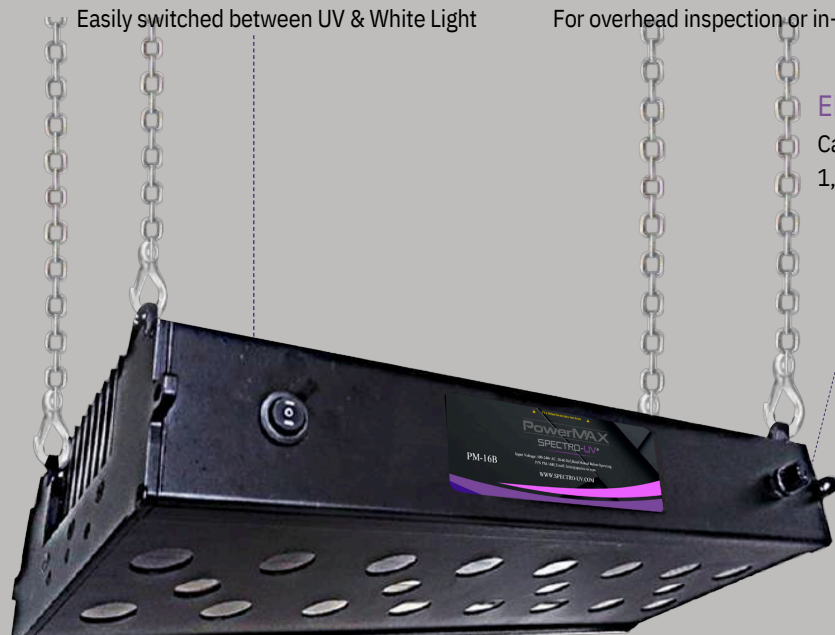
Easily switched between UV & White Light

MOUNTABLE

For overhead inspection or in-line applications

ELECTRONIC INTENSITY CONTROL

Capable of adjusting light output down to 1,000 $\mu\text{W}/\text{cm}^2$



ALUMINUM HOUSING

Built for use in the most rugged environments

LONG LASTING LEDs

INTEGRAL UV-A PASS FILTERS

Reduce visible wavelengths

PowerMAX 365 PM-16B

MODEL	NOMINAL STEADY-STATE UV-A INTENSITY WITH FILTER at 15 in (38 cm) ①	UV-A COVERAGE AREA at 15 in (38 cm) at minimum 1,000 $\mu\text{W}/\text{cm}^2$	WHITE LIGHT INTENSITY	VISIBLE LIGHT MEASUREMENT
PM-16B	6,500 $\mu\text{W}/\text{cm}^2$	10 In x 24 In	>325 foot-candle (>3500 Lux)	<1 foot-candle (<10 lux)

① UV-A intensity reading taken with the Spectro-UV® AccuMAX™ Series meter, and is factory set to the value shown.

PM-16B

Light Source:	16 UV-A LED'S & 4 White LED'S
Lamp Style:	Panel Flood Lamp
Length:	19.1 in (48.5 cm)
Width:	6.7 in (17 cm)
Height:	3.94 in (10 cm)
Weight:	16.5 Lb (7.5 Kg)
Intensity Control:	From 15% - 100%
Power Requirements:	100V - 264V, 50-60 Hz

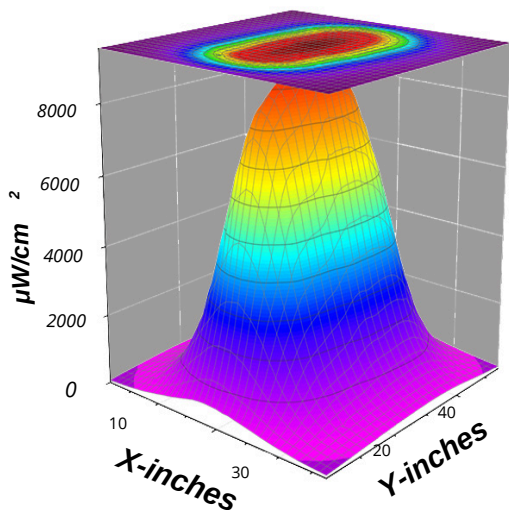


PowerMAX 365 UV-A LED Panel Flood Lamp Kit

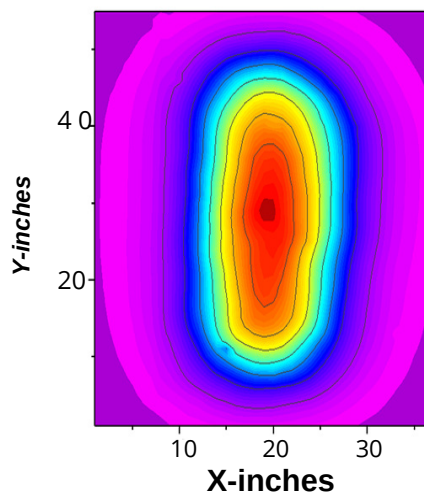
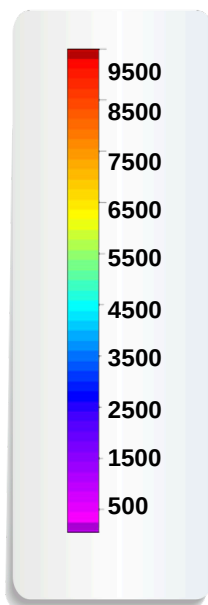
Comes complete with PowerMAX™ 365 UV-A LED Panel Flood Lamp, Power Cord, Chain and Hooks.

UV-A Beam Profiles

Surface Contour Profile at 15 in (38 cm)



Top Intensity Profile at 15 in (38 cm)



SPECTRO-UV®

THE GLOBAL LEADER IN ULTRAVIOLET EQUIPMENT

www.Spectro-UV.com
4 Dubon Ct., Farmingdale, NY 11735
866-230-7305