

MEETS STANDARDS FOR



EN ISO:3059

SPECTRO-UV®

TRITAN™ 365 SERIES

LED UV-A Handheld Lamps

TRI-365 SERIES

Mobile, battery-pack operated versions available.

Available in two intensities to meet your specific NDT inspection requirements: high-intensity and standard-intensity.



3 UV-A LEDs
1 White Light
LED



Broad-Beam
Configuration



Lightweight

LONG-LASTING UV-A LENSES

Reduce the rate of
solarization

WHITE LIGHT LED

Use to locate surface
flaws

BUILT-IN FANS

Maintains optimum
light output

RUBBER BUMPER

With Borofloat® glass
lens protects LEDs from
damage

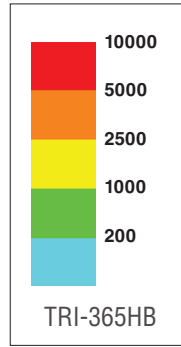
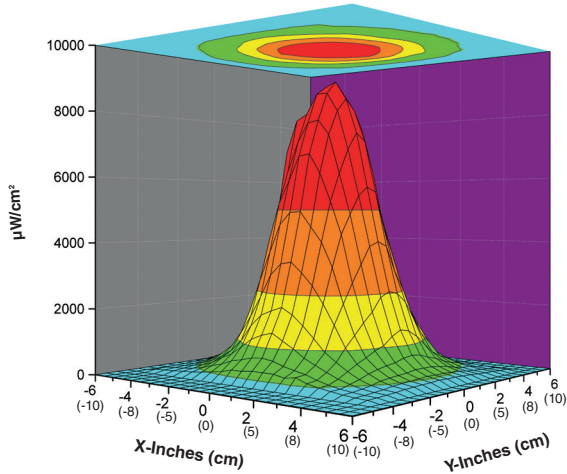


CERTIFICATE OF
LIGHT OUTPUT
included with lamp

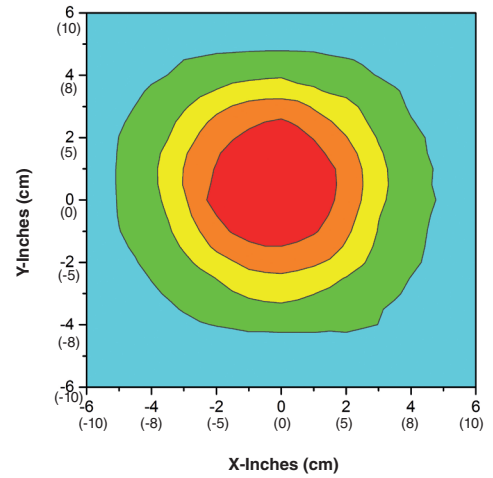


HIGH-INTENSITY UV-A Beam Profile

Surface Contour Profile at 15 in (38 cm)

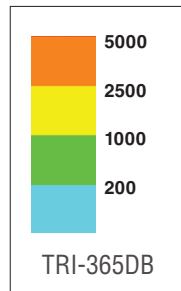
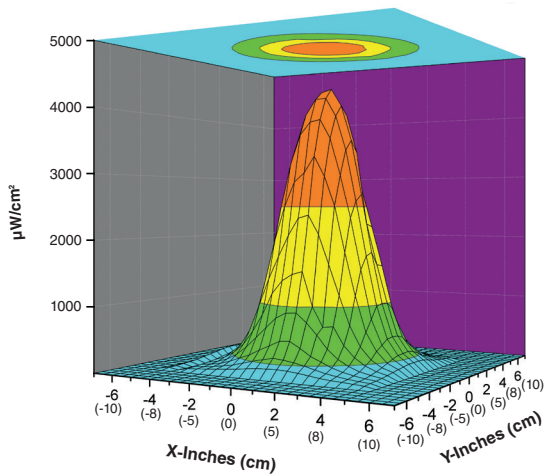


Top Intensity Profile at 15 in (38 cm)

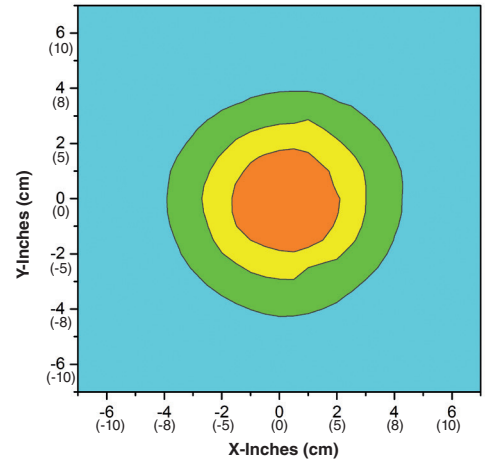


STANDARD-INTENSITY UV-A Beam Profile

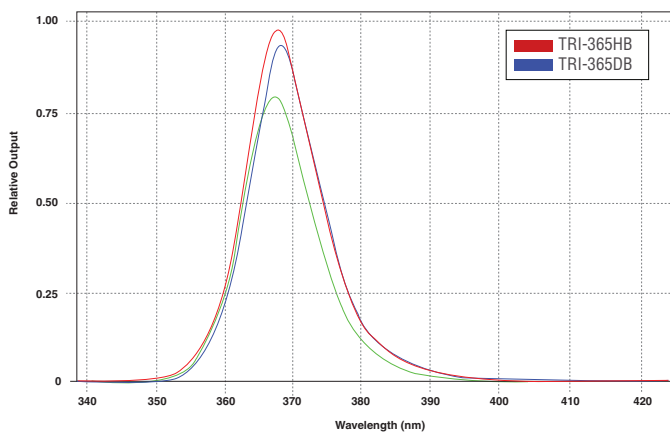
Surface Contour Profile at 15 in (38 cm)



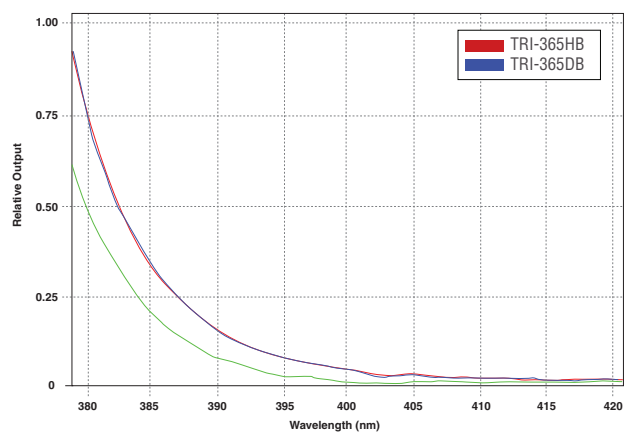
Top Intensity Profile at 15 in (38 cm)



Normalized UV Irradiance



Select Wavelength With and Without UV-A pass filter





TRITAN™ 365 M-SERIES

Portable, battery-operated AC/DC lamp kits. Include TRITAN™ 365 UV-A lamp, rechargeable NiMH battery pack, power supply adapter with AC and DC cord sets, smart AC charger, UV-absorbing spectacles and padded carrying case.



TRITAN™ 365
PS-200A
Industrial Power Supply



TRITAN™ 365
PS-300A
In-Line Power Supply

Replacement Parts and Accessories

IMAGE	PART #	DESCRIPTION	IMAGE	PART #	DESCRIPTION
	127933	Particulate filter assembly		FP-365	Rubber bumper with Borofloat® glass
	127955	Standard faceplate		LH-300A	Lamp holder
	129141	Standard 8 foot (2.4 m) AC power cord		PS-200A	Industrial power supply / primary cord: 8 feet (2.4 m); secondary cord: 20 feet (6.1 m).**
	129145	Extra-long 20 foot (6.1 m) AC power cord		PS-300A	In-line power supply / primary cord: 8 feet (2.4 m); secondary cord: 8 feet (2.4 m).**
	129162	3.5 foot (1.1 m) DC power cord for "M" SERIES lamps		SA-250A	AC/DC power supply adapter for "M" SERIES lamps
	B-6	Bench mount*		UL-110	Long lasting UV-A lens
	BP-30	Battery pack with 12V rechargeable NiMH battery		UVS-30	UV-absorbing spectacles
	BR-150A	Smart AC charger for battery pack		W-6	Wall mount with pin*
	CC-370A	Padded carrying case		WM-100	Wall mounting bracket*
	FA-100	Flexible arm			

* Must be used in conjunction with LH-300A for connecting
** Available in 100-120V, 230V and 240V versions

Series Lamp Comparisons

TRITAN™	PART #	HIGH INTENSITY	STANDARD INTENSITY	NOMINAL STEADY-STATE UV-A INTENSITY at 15 in (38 cm) ①	UV-A COVERAGE AREA at 15 in (38 cm) at minimum 1,200 $\mu\text{W}/\text{cm}^2$
365 Series Versions	TRI-365HB	●		9,000 $\mu\text{W}/\text{cm}^2$	6.5 in (16.5 cm) Diameter
	TRI-365DB*		●	< 5,000 $\mu\text{W}/\text{cm}^2$	5.5 in (14 cm) Diameter
365 Series AC/DC Mobile Versions	TRI-365MHB	●		9,000 $\mu\text{W}/\text{cm}^2$	6.5 in (16.5 cm) Diameter
	TRI-365MDB*		●	< 5,000 $\mu\text{W}/\text{cm}^2$	5.5 in (14 cm) Diameter

*These versions are “tuned” to ensure that they provide a maximum steady-state UV-A intensity of less than 5,000 $\mu\text{W}/\text{cm}^2$ at 15 in (38 cm)

① UV-A intensity reading taken with the Spectro-UV® AccuMAX™ Series meter, and is factory set to the value shown.



Technical Features

Visible Light Measurement	< 2 foot-candles (22 lux)
Light Source	(3) UV-A LEDs, (1) white light LED
Lamp Style	Pistol grip
Lamp Head Diameter	3.25 in (8.25 cm)
Length	8 in (20.3 cm)
Weight	1 lb (454 g)
White Light LED Intensity	400 foot-candles (4,306 lux)
Power Requirements	120VAC / 12VDC (also available in 230V, 240V and 100V versions)
Battery Pack	Type: 12V, NiMH (rechargeable) Run time: 3.5 hours continuous Charge time: 2 hours
Cooling System	Built-in fan

SPECTRO-UV®

www.Spectro-UV.com
4 Dubon Ct., Farmingdale, NY 11735
866-230-7305

NDT
3/21 A18023-2
PRINTED IN USA

© 2025. Spectro-UV. All rights reserved.